



# Endothelin B Receptor Polyclonal Antibody

<b>Catalog No</b>	YP-Ab-12965
<b>Isotype</b>	IgG
<b>Reactivity</b>	Human;Rat;Mouse
<b>Applications</b>	IHC;IF
<b>Gene Name</b>	EDNRB
<b>Protein Name</b>	Endothelin B receptor (ET-B) (ET-BR) (Endothelin receptor non-selective type)
<b>Immunogen</b>	Synthetic Peptide of Endothelin B Receptor AA range: 270-350
<b>Specificity</b>	Endothelin B Receptor protein(A221) detects endogenous levels of Endothelin B Receptor
<b>Formulation</b>	Liquid in PBS containing 50% glycerol, 0.5% BSA and 0.02% sodium azide.
<b>Source</b>	Polyclonal, Rabbit,IgG
<b>Purification</b>	The antibody was affinity-purified from rabbit antiserum by affinity-chromatography using specific immunogen.
<b>Dilution</b>	IHC 1:100-200. IF 1:50-200
<b>Concentration</b>	1 mg/ml
<b>Purity</b>	≥90%
<b>Storage Stability</b>	-20°C/1 year
<b>Synonyms</b>	Endothelin B receptor (ET-B;ET-BR;Endothelin receptor non-selective type)
<b>Observed Band</b>	50kD
<b>Cell Pathway</b>	Cell membrane ; Multi-pass membrane protein. internalized after activation by endothelins. .
<b>Tissue Specificity</b>	Expressed in placental stem villi vessels, but not in cultured placental villi smooth muscle cells.
<b>Function</b>	disease:Defects in EDNRB are a cause of Waardenburg syndrome type IV (WS4) [MIM:277580]; also known as Waardenburg-Shah syndrome. WS4 is characterized by the association of Waardenburg features (depigmentation and deafness) and the absence of enteric ganglia in the distal part of the intestine (Hirschsprung disease).,disease:Defects in EDNRB are the cause of ABCD syndrome (ABCDs) [MIM:600501]. ABCD syndrome is an autosomal recessive syndrome characterized by albinism, black lock at temporal occipital region, bilateral deafness, aganglionosis of the large intestine and total absence of neurocytes and nerve fibers in the small intestine.,disease:Defects in EDNRB are the cause of Hirschsprung disease type 2 (HSCR2) [MIM:600155]; also known as aganglionic megacolon (MGC). It is a congenital disorder characterized by absence of enteric ganglia along a variable length of the intestine. It is t
<b>Background</b>	The protein encoded by this gene is a G protein-coupled receptor which activates a phosphatidylinositol-calcium second messenger system. Its ligand, endothelin, consists of a family of three potent vasoactive peptides: ET1, ET2, and ET3.



Studies suggest that the multigenic disorder, Hirschsprung disease type 2, is due to mutations in the endothelin receptor type B gene. Alternative splicing and the use of alternative promoters results in multiple transcript variants. [provided by RefSeq, Oct 2016],

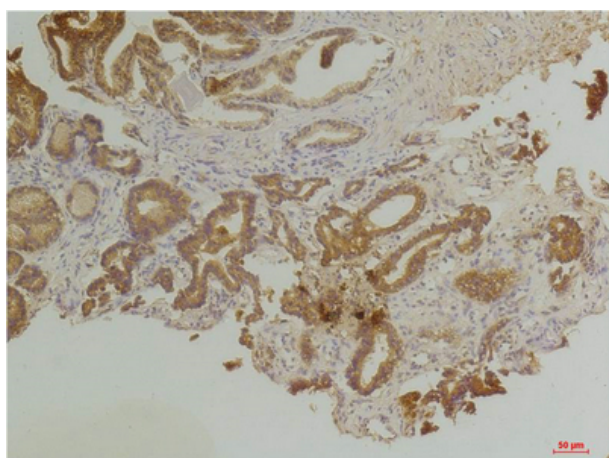
**matters needing attention**

Avoid repeated freezing and thawing!

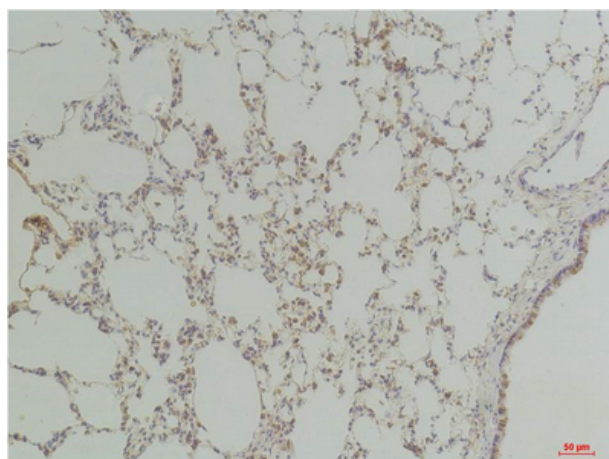
**Usage suggestions**

This product can be used in immunological reaction related experiments. For more information, please consult technical personnel.

**Products Images**



Immunohistochemical analysis of paraffin-embedded Human Prostate Tissue using Endothelin B Receptor Rabbit pAb diluted at 1:200.



Immunohistochemical analysis of paraffin-embedded Rat Lung Tissue using Endothelin B Receptor Rabbit pAb diluted at 1:200.